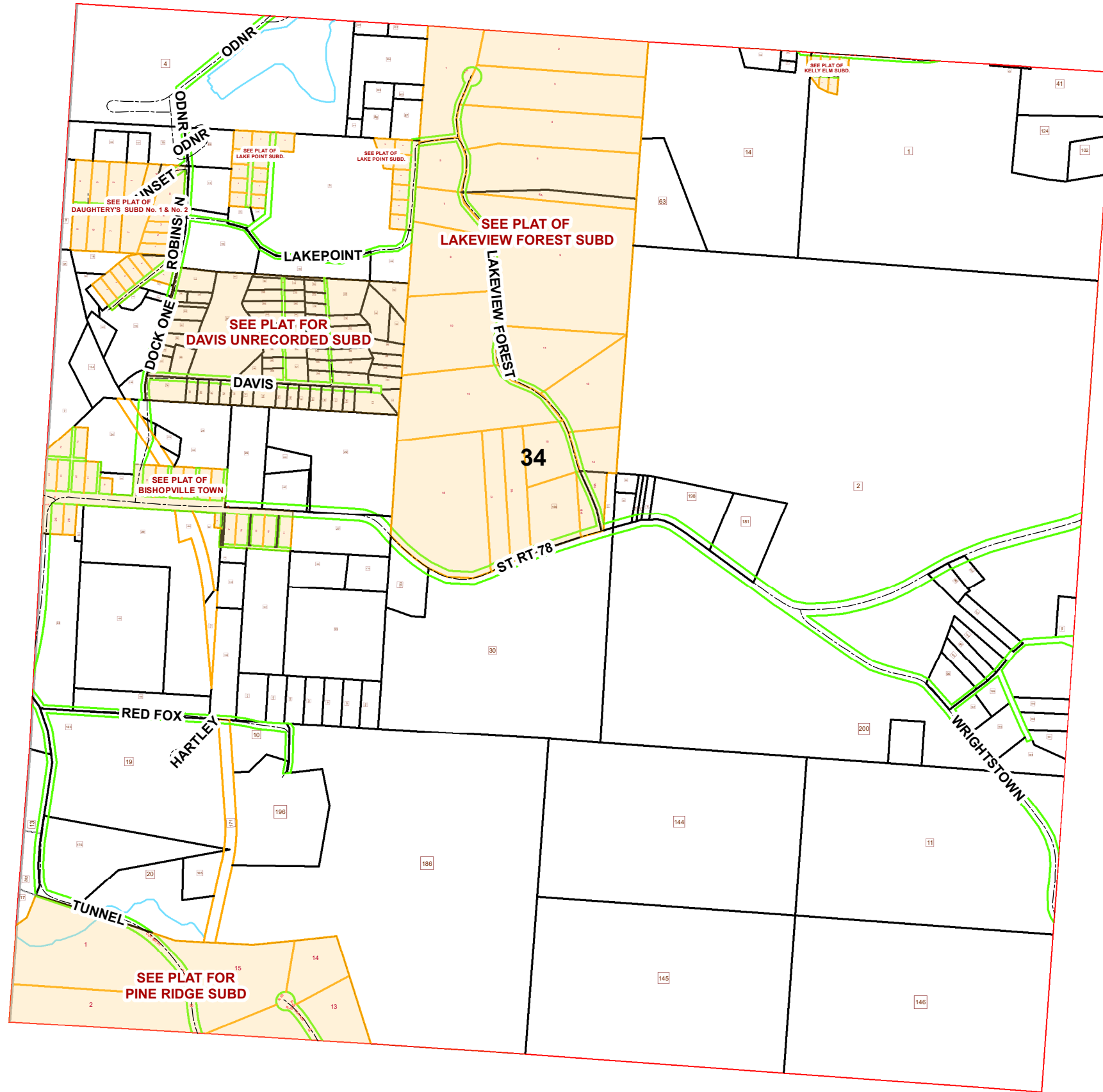


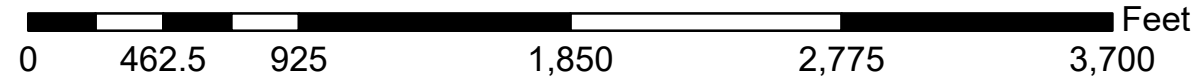
HOMER TOWNSHIP SECTION 34 R13 TWP 7 MORGAN COUNTY, OH



PIN	VOL	PAG	Owner	LegalDescr	Acres
050-007-920-0	OR56	507	ALLEN JANICE M	R13 T07 S34 SD 158	0.142
050-000-160-0	D.V 206	364	ALLEN JANICE M	R13 T07 S34 SD 88	0.54
050-000-170-0	D.V 206	364	ALLEN JANICE M	R13 T07 S34 SD 87	0.749
050-007-910-0	OR56	507	ALLEN JANICE M	R13 T07 S34 SD 160	0.291
050-007-900-0	OR56	507	ALLEN JANICE M	R13 T07 S34 SD 159	0.486
050-000-070-0	D.V 206	364	ALLEN JANICE M	R13 T07 S34 SD 104	2.583
050-000-180-0	D.V 206	364	ALLEN JANICE M	R13 T07 S34 SD 127	0.43
050-000-190-0	D.V 206	364	ALLEN JANICE M	R13 T07 S34 SD 128	0.3
050-000-120-3	OR92	724	BAKER CINDY L & WENDY R NANCE	R13 T07 S34 SD 174	0.09
050-010-020-0	OR226	3071	BIDDLESTONE WILLIAM R JR	R13 T07 S34 SD 62	0.47
050-010-060-0	OR38	171	BIRCHER RENEE L & KAREN A SCHMIDT	R13 T07 S34 SD 162	0.817
050-004-750-9	OR218	3373	BISHOPVILLE WATER DISTRICT	R13 T07 S34 SD 200	1
050-600-030-0	D.V 160	619	BOARD OF TRUSTEES OF HOMER TOWNSHIP	R13 T07 S34 SD 150	0.251
050-000-120-2	OR65	324	BOJANOWSKI RUTH G	R13 T07 S34 SD 170	0.303
050-004-750-1	OR208	2050	BRAGLIN GARY & GRETCHEN	R13 T07 S34 SD 181	2.554
050-004-751-2	OR208	2050	BRAGLIN GARY & GRETCHEN	R13 T07 S34 SD 198	2.337
050-008-150-0	OR202	87	BUCK SUE C	R13 T07 S34 SD 107	0.23
050-001-690-0			BURR OAK FAMILY RESORT LLC	R13 T07 S34 SD 29	7.255
050-007-740-0	OR202	32	CASTLE BARBARA J TOD-JIM, RON & TIM CA	R13 T07 S34 SD 131	0.4
050-007-750-0	OR202	32	CASTLE BARBARA J TOD-JIM, RON & TIM CA	R13 T07 S34 SD 130	0.67
050-600-090-0	OR8	598	CHURCH (CHURCH OF CHRIST)	R13 T07 S34 LOT 8	3.49
050-001-680-0	OR6	768	COTTER JAMES J & MARJORIE M	R13 T07 S34 SD 92	0.91
050-007-150-0	OR5	453	COUCH DAVID C & DEBORAH D	R13 T07 S34 SD 96	0.932
050-006-630-0	OR216	3272	DARBY BRYAN R & MEGAN E	R13 T07 S34 SD 163	0.37
050-006-640-0	OR216	3272	DARBY BRYAN R & MEGAN E	R13 T07 S34 SD 16	0.8
050-008-050-0	OR227	704	DENNISON JOHN E	R13 T07 S34 SD 139	0.117
050-008-040-0	OR227	704	DENNISON JOHN E	R13 T07 S34 SD 103	0.18
050-000-120-1	OR44	762	DENNISON JOHN E	R13 T07 S34 SD 169	1.593
050-008-180-1	OR227	1366	DILLON AMANDA J	R13 T07 S34 SD 183	0.509
050-002-080-0	OR75	111	DILLON ROGER & JANICE M	R13 T07 S34 SD 10	1.69
050-000-230-0	OR214	2702	DUNLEVY CHARLES D JR	R13 T07 S34 SD 33	4.5
050-000-240-0	OR212	2637	DUNLEVY CHARLES DAVID JR	R13 T07 S34 SD 25	0.16
050-007-850-0	OR87	525	EXLINE ROCKY W & AMY D	R13 T07 S34 SD 20	2.868
050-007-850-1	OR87	525	EXLINE ROCKY W & AMY D	R13 T07 S34 SD 176	5.13
050-006-240-0	OR25	290	FAIRES PHILLIP G & SUSAN J	R13 T07 S34 SD 147	0.465
050-000-120-0	OR106	1	FIORE SUSSAN M	R13 T07 S34 SD 05	9.804
050-006-030-0	OR224	2174	GRAHAM ZOE ELIZABETH ETAL	R13 T07 S34 SD 51	0.13
050-003-200-0	OR231	2052	HAMPPEL JAMES KELLY & KATHERINE M	R13 T07 S34 SD 22	6.977
050-003-680-0	OR229	2327	HOBOCIENSKI WALTER F	R13 T07 S34 SD 35	0.41
050-003-720-0	OR229	2327	HOBOCIENSKI WALTER F	R13 T07 S34 SD 149	0.14
050-003-700-0	OR229	2327	HOBOCIENSKI WALTER F	R13 T07 S34 SD 119	0.15
050-003-690-0	OR229	2327	HOBOCIENSKI WALTER F	R13 T07 S34 SD 36	0.26

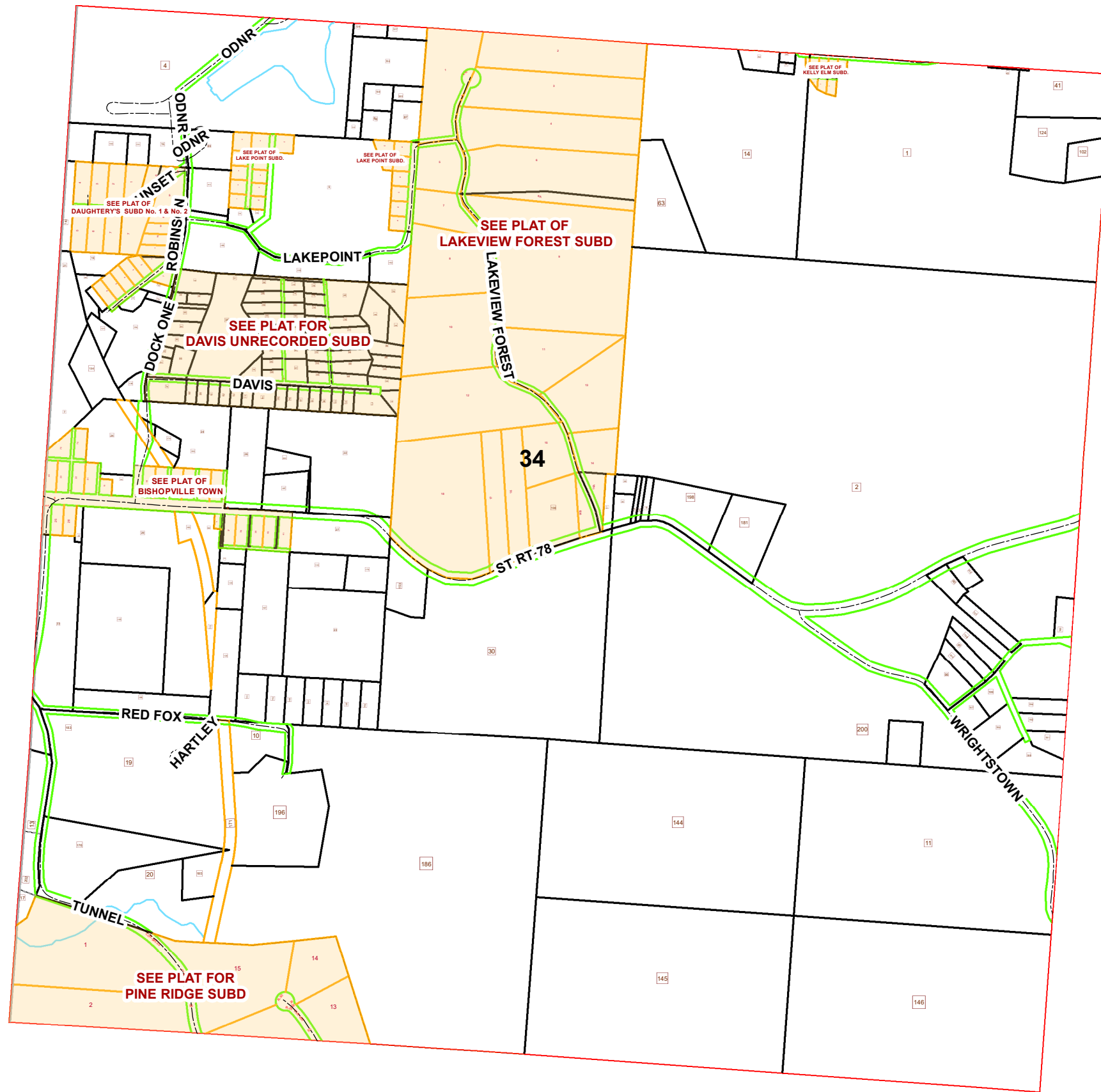


Boundaries	
----- Hidden	--- ROW
--- Hydro	--- Section
--- Roads	--- Township
--- County	--- Parcel
--- Lot	--- Parcels



Disclaimer: The information that these maps contains is for reference purposes only. Please bring any errors to the attention of the Engineer's Office staff.
Thank you

HOMER TOWNSHIP SECTION 34 R13 TWP 7 MORGAN COUNTY, OH



PIN	VOL	PAG	Owner	LegalDescr	Acre
050-009-400-0	OR22	273	HOMER TOWNSHIP TRUSTEES	R13 T07 S34 SD 172	0.157
050-001-720-0	D.V	168	683 HOMER TOWNSHIP TRUSTEES C/O ELEANOR S	R13 T07 S34 SD 135	0.769
050-001-710-0	D.V	168	683 HOMER TOWNSHIP TRUSTEES C/O ELEANOR	R13 T07 S34 SD 136	1.89
050-009-120-0	OR203	219	HOOPER KATIE J & MCGEE GEORGE D	R13 T07 S34 SD 100	0.537
050-009-110-0	OR203	219	HOOPER KATIE J & MCGEE GEORGE D	R13 T07 S34 SD 91	0.528
050-009-130-0	OR203	219	HOOPER KATIE J & MCGEE GEORGE D	R13 T07 S34 SD 109	0.6
050-005-800-0	OR232	2470	HOUCARD CHRISTINA M	R13 T07 S34 SD 41	2.866
050-003-940-0	OR226	3152	HUMPHREY GARY W & LAVERNE M	R13 T07 S34 SD 17	0.38
050-003-930-2	OR225	2405	JOYCE SCOTT T & SARA E	R13 T07 S34 SD 178	0.327
050-004-340-0	OR59	92	KEIRNS JOHN O & KIM L	R13 T07 S34 SD 102	1
050-004-350-0	OR59	92	KEIRNS JOHN O & KIM L	R13 T07 S34 SD 124	2.76
050-004-750-2	OR208	2055	KNODERER CHRISTOPHER TRUSTEE	R13 T07 S34 SD 182	0.216
050-004-770-0	D.V	140	527 KNODERER JERRY JOE TRUSTEE	R13 T07 S34 SD 30	28.46
050-004-750-0	D.V	140	527 KNODERER JERRY JOE TRUSTEE	R13 T07 S34 PRO S	130.7
050-004-790-0	D.V	171	333 KNODERER VICTORIA L	R13 T07 S34 SD 90	0.373
050-004-780-0	D.V	171	333 KNODERER VICTORIA L	R13 T07 S34 SD 132	0.389
050-007-850-2	OR69	287	LENT BRIAN L & FRANKIE D	R13 T07 S34 SD 185	1.002
050-005-750-1	OR231	1615	LOWERY EMILY B	R13 T07 S34 SD 179	0.962
050-005-750-0	OR231	1615	LOWERY EMILY B	R13 T07 S34 SD 133	1.328
050-003-210-0	OR231	1530	LOWERY EMILY B	R13 T07 S34 SD 27	2.604
050-001-260-0	OR231	1530	LOWERY NORMAN S & EMILY B	R13 T07 S34 SD 23	5.66
050-003-520-0	OR226	2155	MARANG JERRY & MARY HELEN	R13 T07 S34 SD 19	13.72
050-004-750-3	OR208	760	MAYLES DEWARD L & JODY L	R13 T07 S34 SD 184	1.148
050-004-750-8	OR216	3491	MAYLES DEWARD L & JODY L	R13 T07 S34 SD 199	0.476
050-006-000-0	OR170	128	MCCLELLAND DANIEL A & PHYLLIS	R13 T07 S34 SD 174	0.32
050-003-931-3	OR170	128	MCCLELLAND DANIEL A & PHYLLIS A	R13 T07 S34 SD 193	0.137
050-004-750-4	OR224	139	MCWILLIAMS NICHOLAS RYAN & JESSICA	R13 T07 S34 SD 189	1.1
050-004-750-5	OR224	139	MCWILLIAMS NICHOLAS RYAN & JESSICA	R13 T07 S34 SD 191	0.5
050-004-750-6	OR224	139	MCWILLIAMS NICHOLAS RYAN & JESSICA	R13 T07 S34 SD 192	0.5
050-004-750-7	OR224	139	MCWILLIAMS NICHOLAS RYAN & JESSICA	R13 T07 S34 SD 194	0.5
050-001-690-1	OR173	555	MOODY TERRY G JR & KATRINA R	R13 T07 S34 SD 188	2
050-007-030-0	OR223	2458	MULFORD ADAM LEE	R13 T07 S34 SD 166	2.79
050-006-620-0	D.V	178	401 MURPHY JAMES A SR & DOROTHY M	R13 T07 S34 SD 121	0.42
050-003-640-0	OR215	1533	O'DONNELL PATRICK	R13 T07 S34 SD 165	0.48
050-009-610-0	OR232	3356	O'DONNELL PATRICK C	R13 T07 S34 SD 101	0.59
050-007-210-0	OR128	427	PEART CHARLES	R13 T07 S34 SD 31	0.11
050-007-220-0	OR128	427	PEART CHARLES	R13 T07 S34 SD 32	0.11
050-002-081-1	OR232	1306	PORTIER JOSHUA & REGINA	R13 T07 S34 SD 196	5.855
050-007-620-0	OR217	2143	PUGLIESE GEOFFREY A & MELISSA COYER	R13 T07 S34 SD 1	33.11
050-007-630-0	OR217	2143	PUGLIESE GEOFFREY A & MELISSA COYER	R13 T07 S34 SD 14	17.79
050-003-930-3	OR174	499	RICHARDS JOHN DOULAS & REBECCA A	R13 T07 S34 SD 24	2.827
050-001-770-0	OR33	282	ROSS JEFFREY A & VICTORIA J	R13 T07 S34 SD 168	0.58
050-001-760-0	OR33	282	ROSS JEFFREY A & VICTORIA J	R13 T07 S34 SD 167	0.57
050-001-750-0	OR33	282	ROSS JEFFREY A & VICTORIA J	R13 T07 S34 SD 161	0.57
050-001-740-0	OR33	282	ROSS JEFFREY A & VICTORIA J	R13 T07 S34 SD 157	0.57
050-001-730-0	OR33	282	ROSS JEFFREY A & VICTORIA J	R13 T07 S34 SD 148	0.57
050-007-880-0	D.V	159	225 ROSS JEFFREY A & VICTORIA J	R13 T07 S34 SD 142	0.57
050-007-870-0	D.V	159	225 ROSS JEFFREY A & VICTORIA J	R13 T07 S34 SD 141	0.91



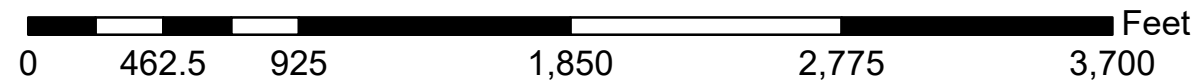
Boundaries	
----- Hidden	--- ROW
--- Hydro	--- Section
--- Roads	--- Lot
--- County	--- Township
--- Parcel	--- Parcels



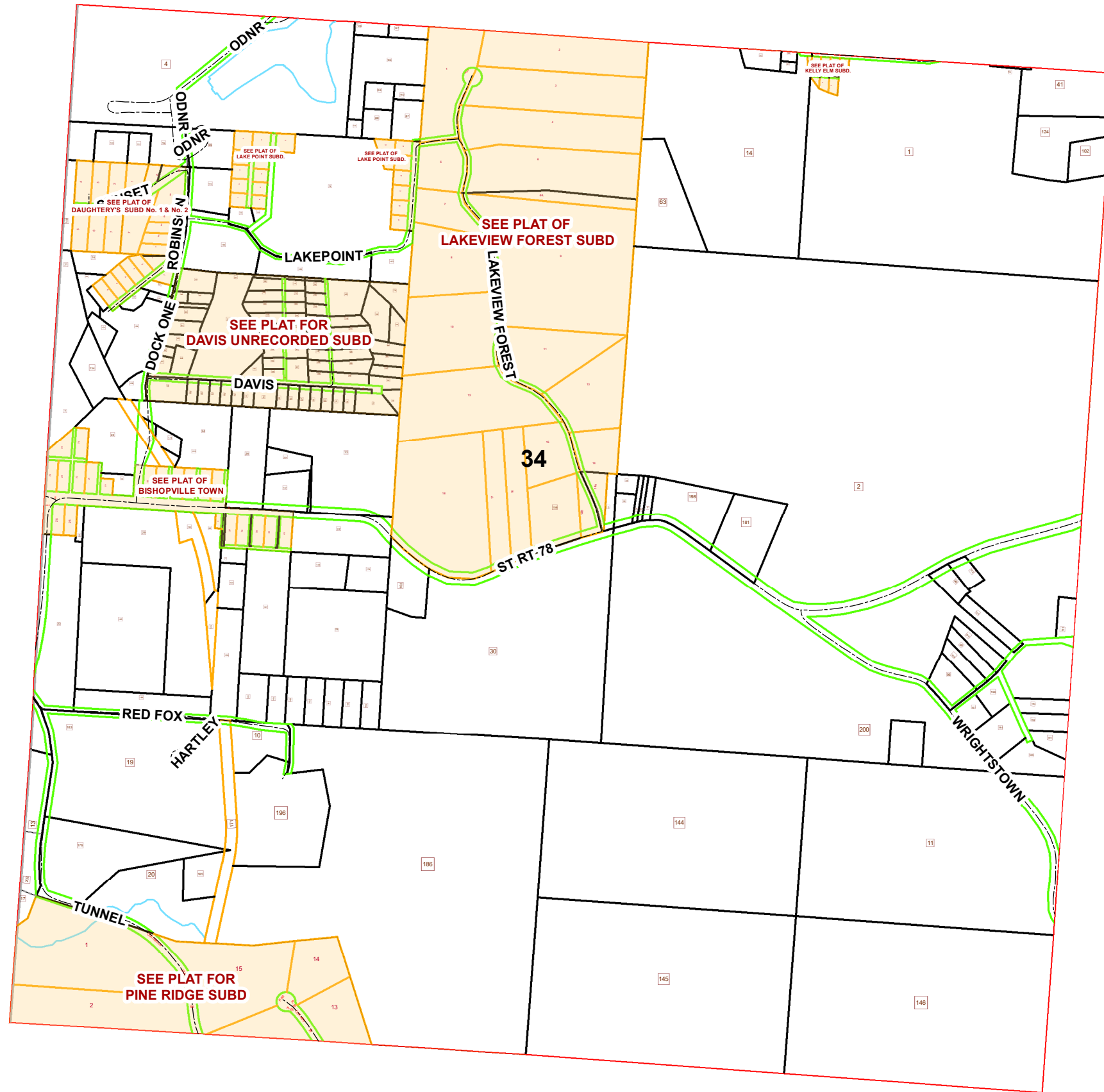
Disclaimer: The information that these maps contains is for reference purposes only. Please bring any errors to the attention of the Engineer's Office staff.

Thank you

Source: Morgan County Engineer's Office
 Author: Marcia Wolfe
 Date: 6/8/2020



HOMER TOWNSHIP SECTION 34 R13 TWP 7 MORGAN COUNTY, OH



PIN	VOL	PAG	Owner	LegalDescr	Acre
050-004-410-0	OR213	2837	RUSHING KATHY JO MALONE & WILLIAM EUG	R13 T07 S34 SD 43	0.09
050-001-670-0	OR195	243	SCHNEIDER JOHN D & BETH	R13 T07 S34 SD 164	2.297
050-008-180-0	OR231	4336	SHAMHART MARVIN	R13 T07 S34 SD 13	1.139
050-008-180-2	OR232	5909	SHAMHART SCOTT M & STACEY K	R13 T7 S34 SD202	0.792
050-008-410-0	OR91	243	SMITH BRADLEY J	R13 T07 S34 SD 63	3.46
050-000-220-0	OR94	372	SMITH KURT & SHARON E	R13 T07 S34 SD 7-2	2.38
050-008-390-0	D.V 150	183	SMITH KURT T & SHARON	R13 T07 S34 SD 134	1.32
050-003-930-0	OR214	279	SMITH KURT T & SHARON E	R13 T07 S34 SD 24	2.03
050-601-150-0	D.V 138	411	STATE OF OHIO	R13 T07 S34 SD 115	1.2
050-600-320-0	D.V 98	24	STATE OF OHIO	R13 T07 S34 LOT 15	2.33
050-600-300-0	D.V 100	427	STATE OF OHIO	R13 T07 S34 LOT 4	29.6
U/II	D.V 131	9	STATE OF OHIO		0
050-004-560-0	OR209	1476	TRACE PRENTICE A	R13 T07 S34 SD 153	1.55
050-002-080-1	OR206	283	TRACE TONY C & REBECCA ANN & PRENTICE	R13 T07 S34 SD 186	48.01
050-001-260-1	OR207	1180	VANSICKLE WILLIAM A & JENNIFER L	R13 T07 S34 SD 197	3.55
050-003-200-1	OR229	2190	VENRICK RAYMOND F & JAVON COOPER	R13 T07 S34 SD 187	1.114
050-003-200-2	OR231	1185	VENRICK RAYMOND F & JAVON COOPER	R13 T7 S34 SD201 S	0.673
050-009-390-0	OR224	799	WALLACE FRED M & KATHY J	R13 T07 S34 SD 171	2.5
050-009-400-2	OR205	1709	WARD MARY P & RANDY L	R13 T07 S34 SD 190	0.843
050-001-690-2	OR205	2128	WARD RANDY L & MARY P	R13 T07 S34 SD 195	7.411
050-007-660-0	OR215	2175	WILSON LAWRENCE O	R13 T07 S34 SD 146	26.73
050-007-680-0	OR215	2175	WILSON LAWRENCE O	R13 T07 S34 SD 145	26.73
050-007-690-0	OR217	2175	WILSON LAWRENCE O	R13 T07 S34 SD 11	26.73
050-007-670-0	OR215	2175	WILSON LAWRENCE O	R13 T07 S34 SD 144	26.73
050-001-650-0	OR227	3281	YOUNG VIRGINIA M	R13 T07 S34 SD 138	0.383



Boundaries	
----- Hidden	--- ROW
--- Hydro	--- Section
--- Roads	--- Lot
--- County	--- Parcel
--- Township	--- Parcels



Disclaimer: The information that these maps contains is for reference purposes only. Please bring any errors to the attention of the Engineer's Office staff.
Thank you

Source: Morgan County Engineer's Office
Author: Marcia Wolfe
Date: 6/8/2020

